

Technical data sheet



Product features

Chip scuttle heated from above and bellow ceramic heat lamp

Model	SAP Code	00008705
--------------	-----------------	----------



- Drain: Yes
- Maximum device temperature [°C]: 90
- Minimum device temperature [°C]: 30
- Material: Stainless steel
- Heating location: Upper and lower

SAP Code	00008705	Net Weight [kg]	13.00
Net Width [mm]	330	Power electric [kW]	1.200
Net Depth [mm]	587	Loading	230 V / 1N - 50 Hz
Net Height [mm]	447		

Technical data sheet



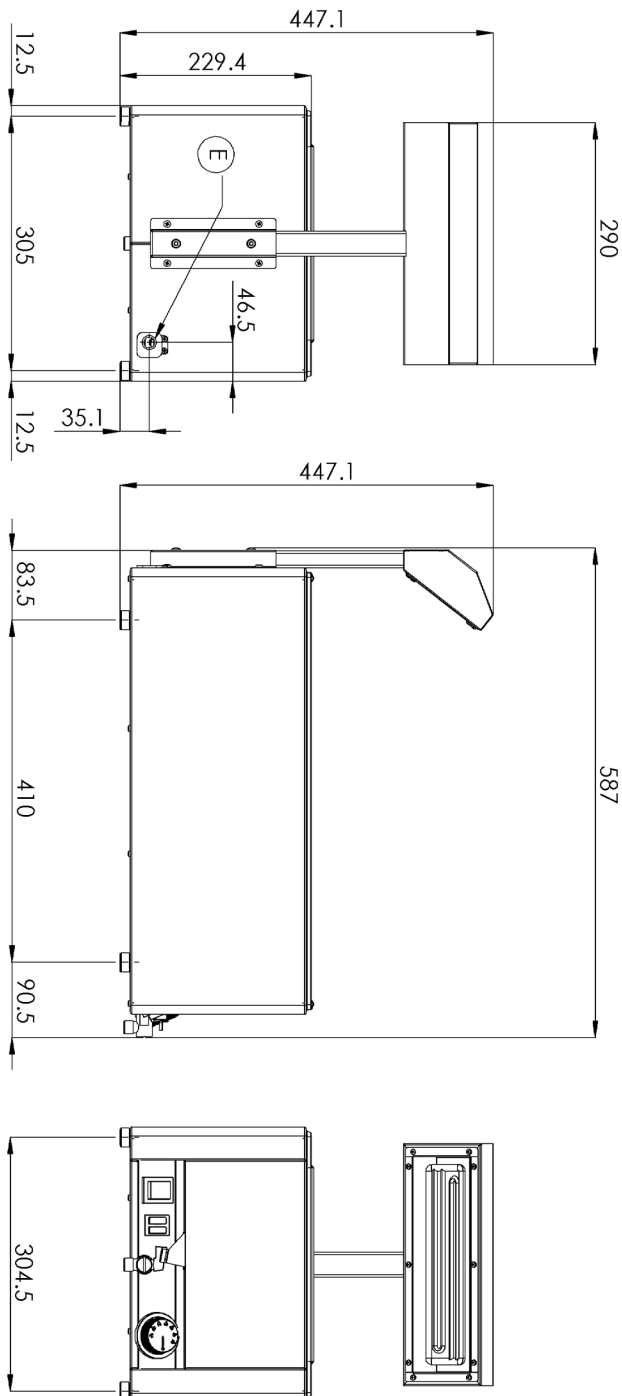
Technical drawing

Chip scuttle heated from above and bellow ceramic heat lamp

Model

SAP Code

00008705



Technical data sheet



Product benefits

Chip scuttle heated from above and bellow ceramic heat lamp

Model

SAP Code

00008705

1

All-stainless steel bathtub

long life
resistance of AISI 304 stainless steel material
the material does not cut

- savings on service interventions
- easier and faster operation

2

Degree of protection of the control elements IPX4

maintenance-free system
resistance to splash water
long life

- savings on service interventions
- easy cleaning and maintenance of equipment

3

Upper heating

radiant heat from above as well

- food heated quickly and evenly

Technical data sheet



Technical parameters

Chip scuttle heated from above and bellow ceramic heat lamp

Model

SAP Code

00008705

1. SAP Code:

00008705

2. Net Width [mm]:

330

3. Net Depth [mm]:

587

4. Net Height [mm]:

447

5. Net Weight [kg]:

13.00

6. Gross Width [mm]:

395

7. Gross depth [mm]:

705

8. Gross Height [mm]:

482

9. Gross Weight [kg]:

15.00

10. Device type:

Electric unit

11. Construction type of device:

Table top

12. Power electric [kW]:

1.200

13. Loading:

230 V / 1N - 50 Hz

14. Protection of controls:

IPX4

15. Material:

Stainless steel

16. Indicators:

operation and warm-up

17. Device heating type:

Ceramic lamp

18. Maximum device temperature [°C]:

90

19. Minimum device temperature [°C]:

30

20. Adjustable feet:

Yes

21. False bottom:

Yes

22. Drain:

Yes

23. Number of GN / EN:

1

24. GN / EN size in device:

GN 1/1

25. GN device depth:

150

26. Heating location:

Upper and lower

27. Cross-section of conductors CU [mm²]:

0,5

- Výkon (kW): 2,4-3,3 (230 V)